

MAILONE™

Integrated Mailing & Accounting Software



DON'T LET THE TEDIUM OF MAILROOM ACCOUNTING WEIGH YOU DOWN!

FP's **mailone™** software solution makes weighing, processing, tracking, and reporting easier and more efficient than ever before. All the tools you need are in one complete package:

- **Accurately Record, Analyze, and Report Mailroom Expenses**
- **Instantly Access USPS® Commercial-Base Pricing Discounts**
- **Automatically Process USPS® Confirm® Services**



MAILINGSOLUTIONS
AN FP GROUP COMPANY

Mailroom Accounting and Reporting Made Easy

Discounts, ease-of-use, and 24/7 tracking make FP's **mailone™** software program the only cost-effective and efficient solution for your unique mailroom needs.

KEY ADVANTAGES

ACCURATELY RECORD, ANALYZE, & REPORT MAILROOM EXPENSES

Your mail is processed, tracked, and saved so all the details are ready for on-the-spot reporting.

- Capture every detail with 3-Tier Postal Accounting
- Record each mailpiece as an individual transaction
- Add handling charges per account to bill back clients
- Customize the PC imports/exports to fit your needs

INSTANTLY ACCESS USPS® COMMERCIAL-BASE PRICING (CBP) DISCOUNTS

mailone™ automatically prints CBP postage through the FP meter and uploads the data to the USPS®. So sending just 2 Express Mail® pieces per day would save you over \$600 per year vs. USPS® retail rates*, or over \$1,700 per year vs. UPS FedEx.*

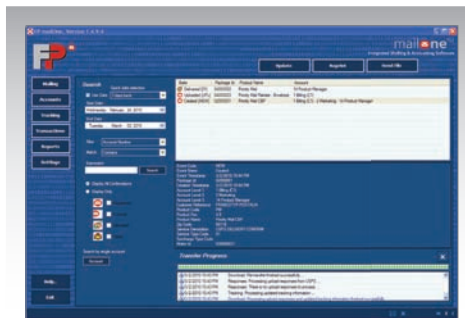
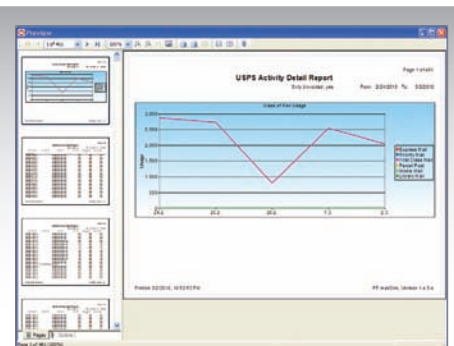
*Based on 1 lb. Express Mail® and Retail UPS/FedEx Residential Next Day Air Saver: Zone 5.

AUTOMATICALLY PROCESS USPS® CONFIRMATION SERVICES

mailone™ saves you money by using electronic Confirm® services. Just select Delivery Confirmation™ or Signature Confirmation™ while processing Priority Mail®. By processing electronically, Delivery Confirmation™ is FREE, saving you \$0.70 on each mailpiece you process with **mailone™**. Signature Confirmation™ is only \$1.95, saving you \$0.40 on each mailpiece you process with **mailone™**.

- **mailone™** seamlessly communicates with the USPS® to upload/download Confirmation Services data
- Automatically generate Confirmation Barcodes
- Receive live USPS® delivery status updates anytime
- Easily lookup old transactions & verify delivery dates
- Reprint barcoded labels without reprinting postage

SPECIAL FEATURES



ACCOUNT REPORTS/EXPORTS

- Over 30 USPS® Product and Accounting Reports
- Simple .csv Export Feature Requires Only 3 Clicks
- User Defined Profiles to Help Determine Exported Account Details

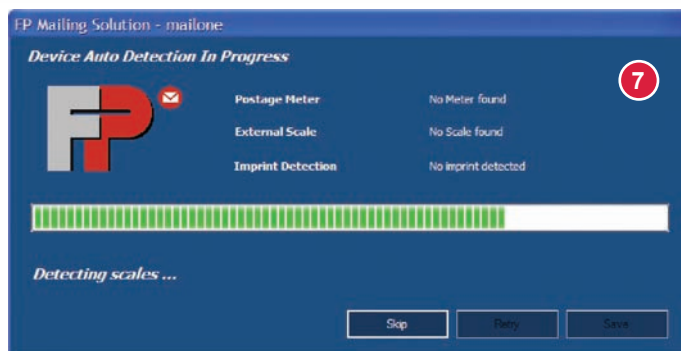
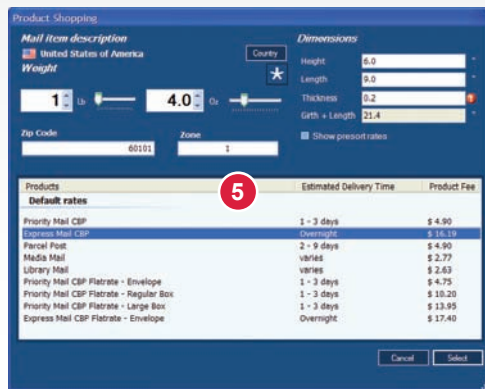
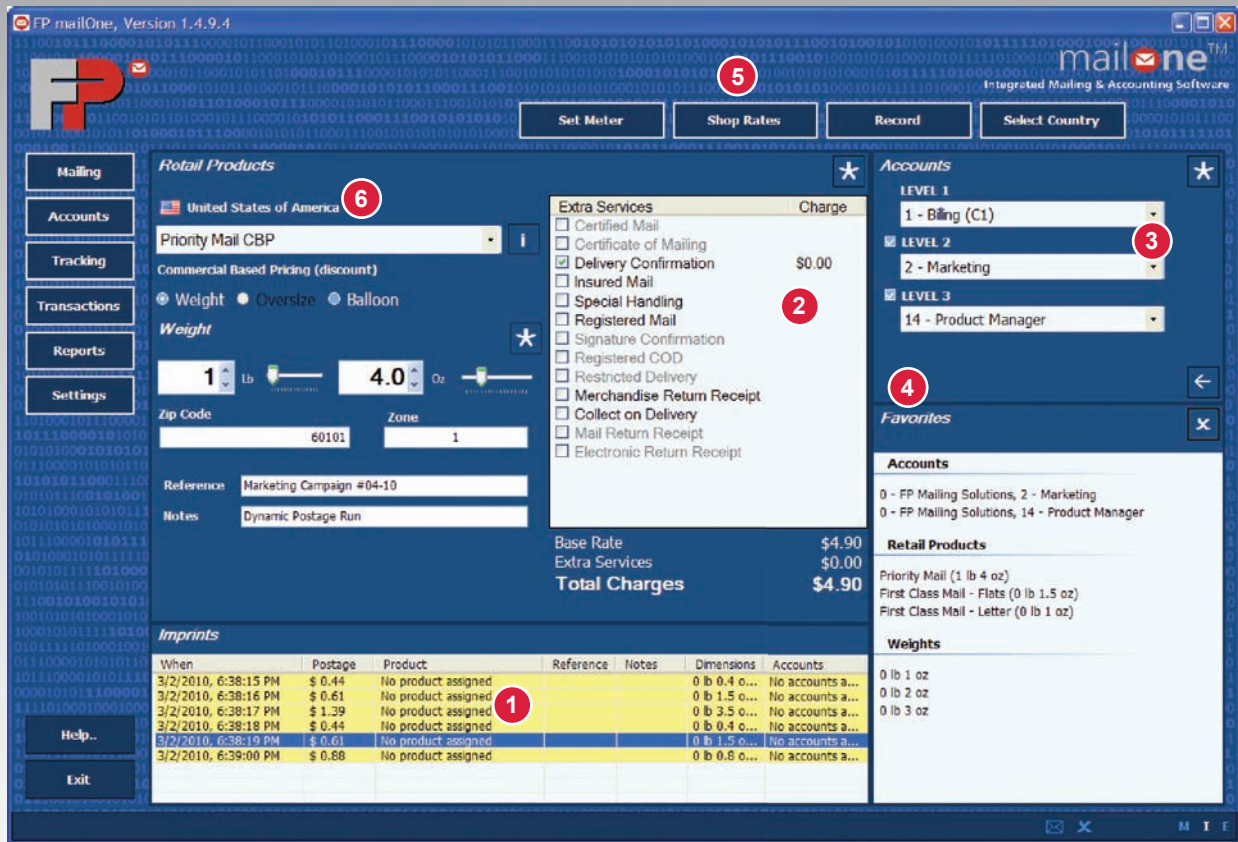
ONLINE USPS® TRACKING

- Versatile Transaction Lookup/Search Feature
- Automatic Daily/Hourly File Upload to USPS®
- Simple Icon-Based Status Update

EASILY INTEGRATES WITH FP MAILING MACHINES

- **mailone™** is Compatible with the **centormail™ MAX** Dynamic Scale
- Postage Spending, including the 4 SBP Dimensions: Weight, Height, Length, and Thickness

PRODUCT OVERVIEW



1. Detailed Imprint Records
2. USPS® Extra Services Selection
3. 3-Tier Account Tracking
4. User-Defined "Favorites"
5. USPS® Rate Shopping
6. USPS® Product Information
7. Auto-Detection Feature



COMPATIBLE WITH:

- **utimail™ 65/95** and **centormail™** Series
- FP Integrated Scales
- **flexiscale™** and **excelscale™** Lines (optional)
- 23" LCD Touch Screen Monitor (optional)
- Eltron Label Printer (optional)

SYSTEM REQUIREMENTS

PC with 233MHz processor clock speed (single or dual processor system); Intel Pentium/Celeron family or AMD K6/Athlon/Duron family or compatible processor • 256 megabytes (MB) of RAM • 2.0 gigabytes (GB) of available hard disk space • Super VGA (1024 x 768) resolution video adapter and monitor • CD-ROM or DVD Drive capable of reading CD-ROMs • Windows® XP-Professional SP2 operating system, Windows Vista, Windows 7 • Keyboard and mouse or compatible pointing device • Microsoft Internet Explorer version 6.0 (IE6) • 2 available USB Ports • MS .NET Framework 3.5

** NOTE: System requirements are subject to change